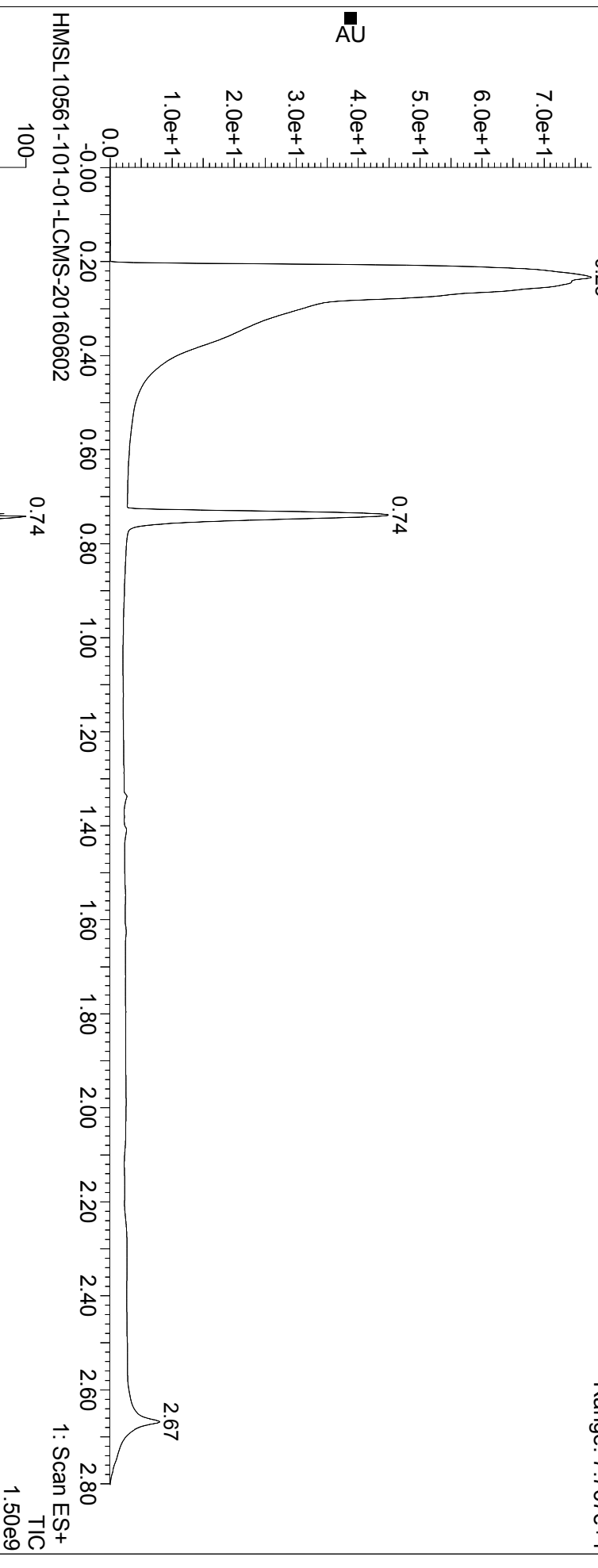


HMSL10561-101-01

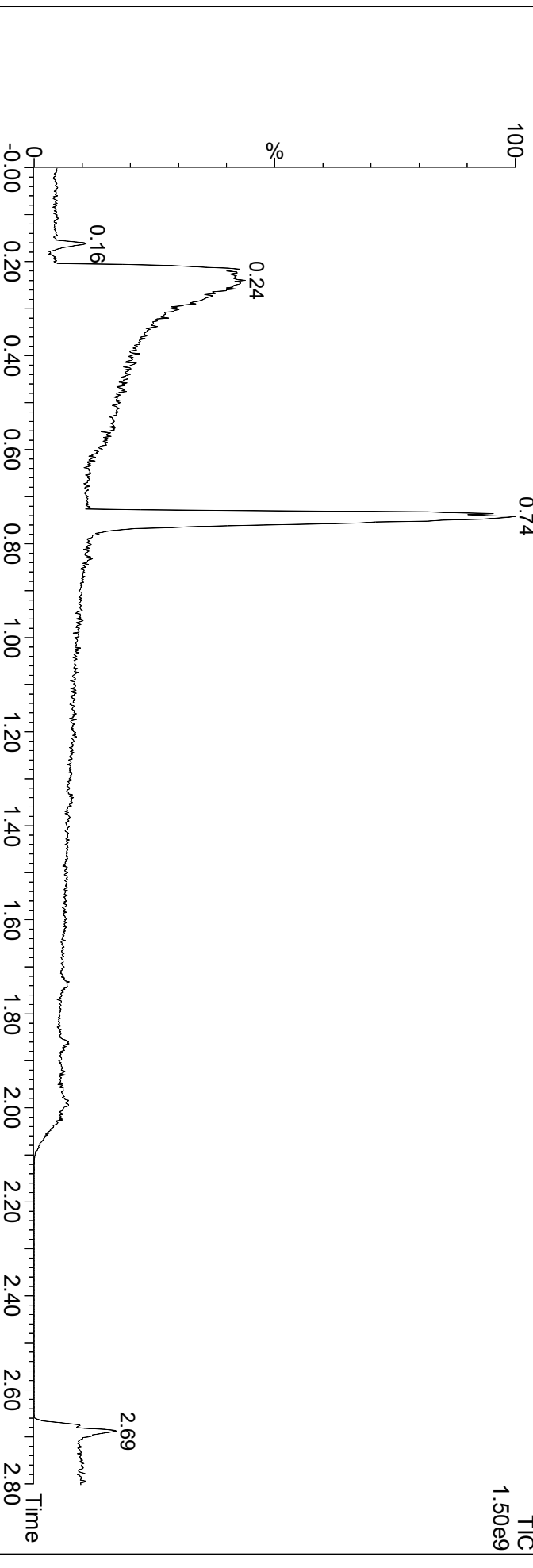
HMSL10561-101-01-LCMS-20160602

2: Diode Array
Range: 7.767e+1



HMSL10561-101-01-LCMS-20160602

1: Scan ES+
TIC
1.50e9



HMSL10561-101-01

HMSL10561-101-01-LCMS-20160602 371 (0.742) Cm (348:400)

1: Scan ES+
4.26e7

