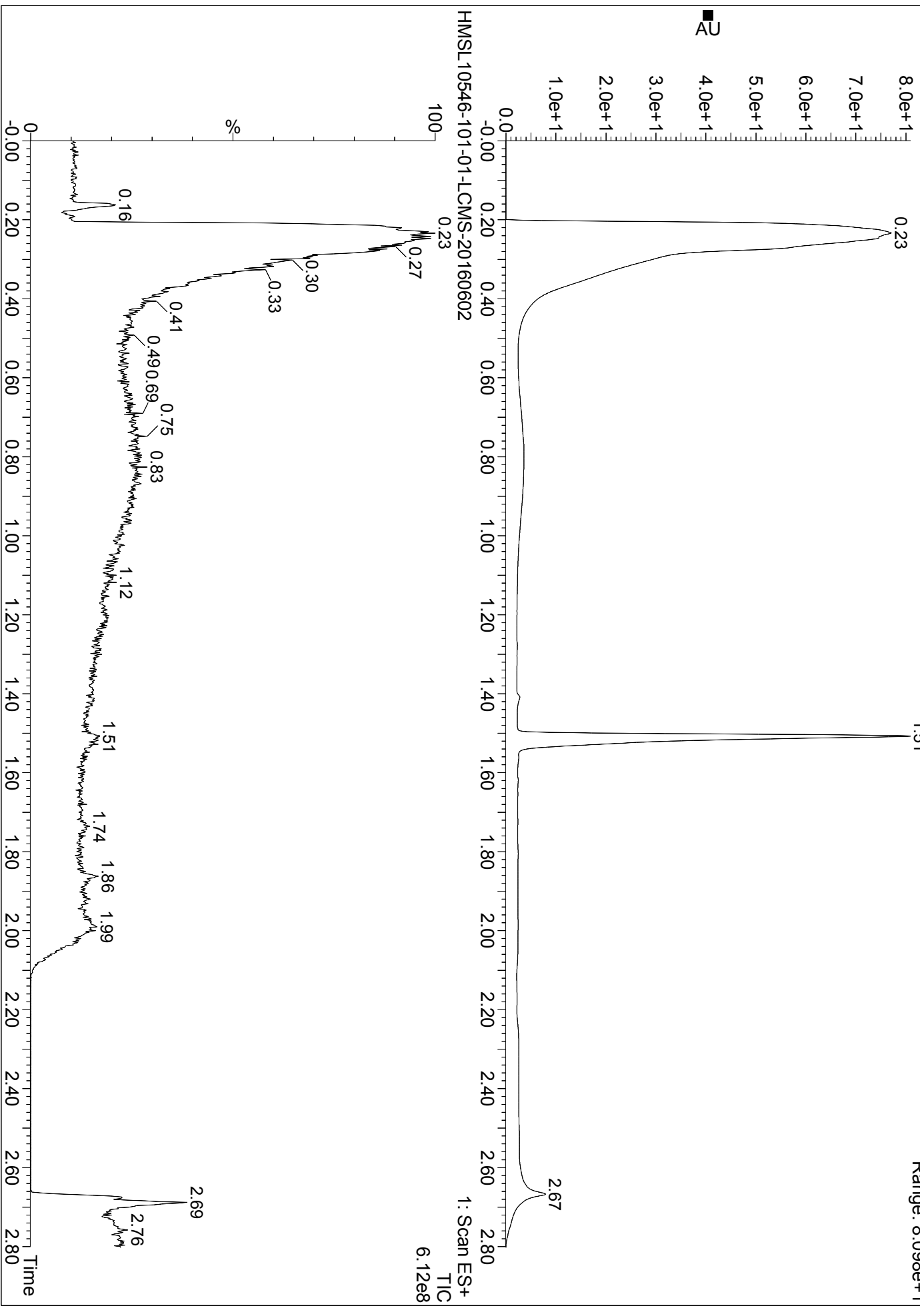


# HMSL10546-101-01

HMSL10546-101-01-LCMS-20160602

2: Diode Array  
Range: 8.098e+1



HMSL10546-101-01-LCMS-20160602

1: Scan ES+  
TIC  
6.12e8

# HMSL10546-101-01

HMSL10546-101-01-LCMS-20160602 754 (1.508) Cm (746:773)

1: Scan ES+  
6.07e5

