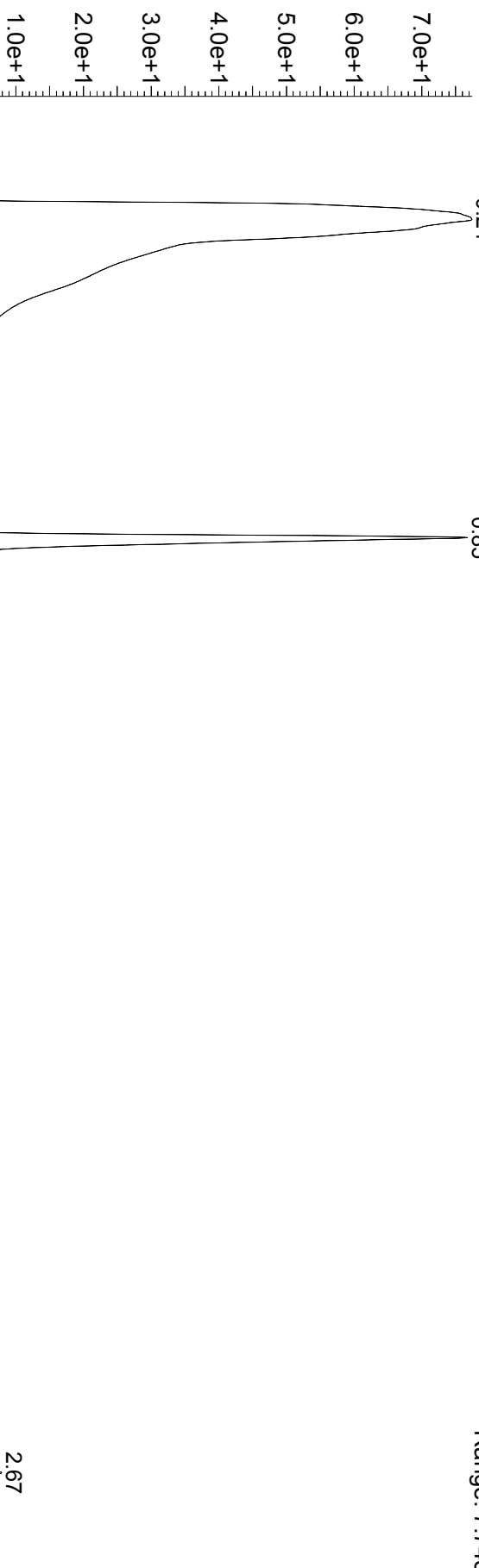


HMSL10548-101-01

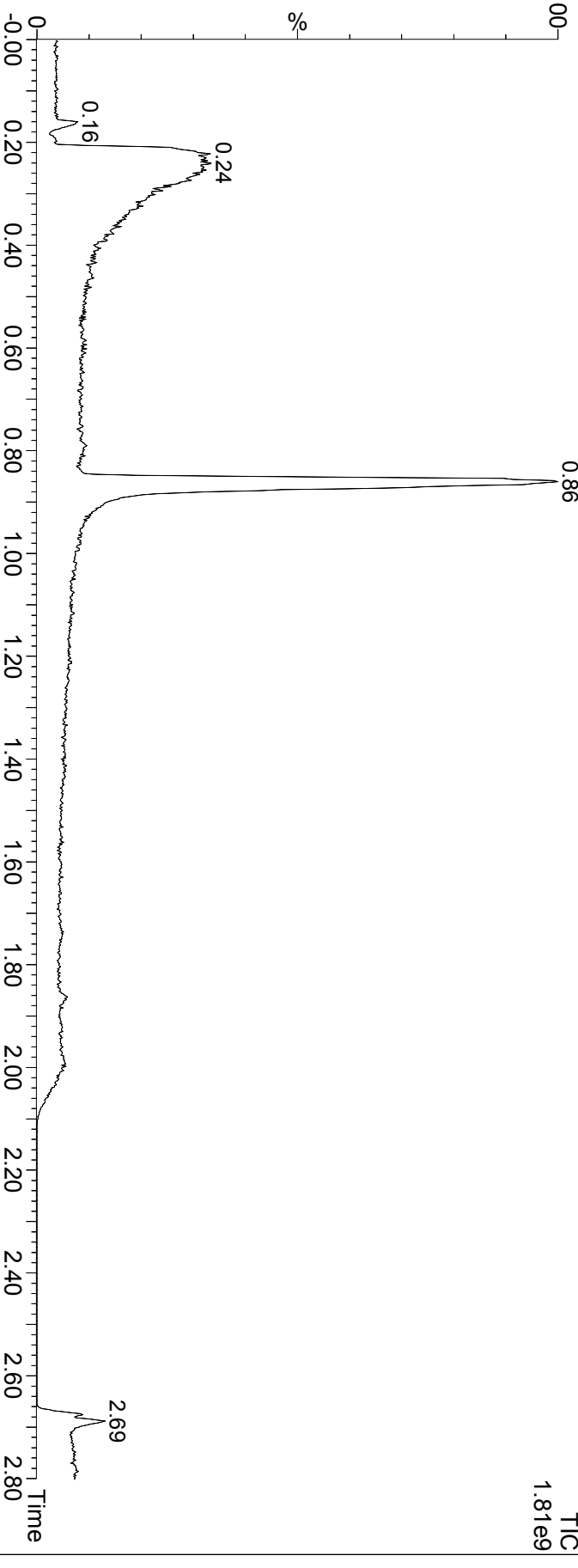
HMSL10548-101-01-LCMS-20160602

2: Diode Array
Range: 7.745e+1



HMSL10548-101-01-LCMS-20160602

1: Scan ES+
TIC
1.81e9



HMSL10548-101-01

HMSL10548-101-01-LCMS-20160602 430 (0.860) Cm (417:457)

1: Scan ES+
4.80e7

