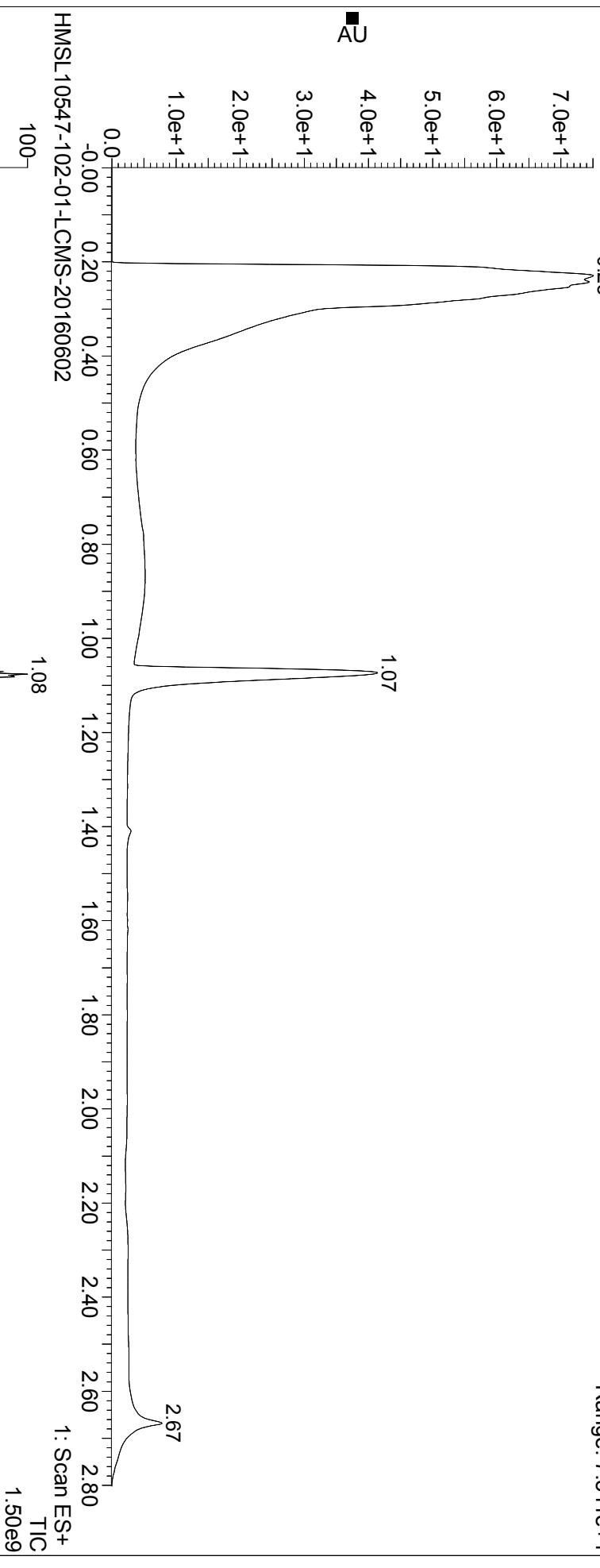


HMSL10547-102-01

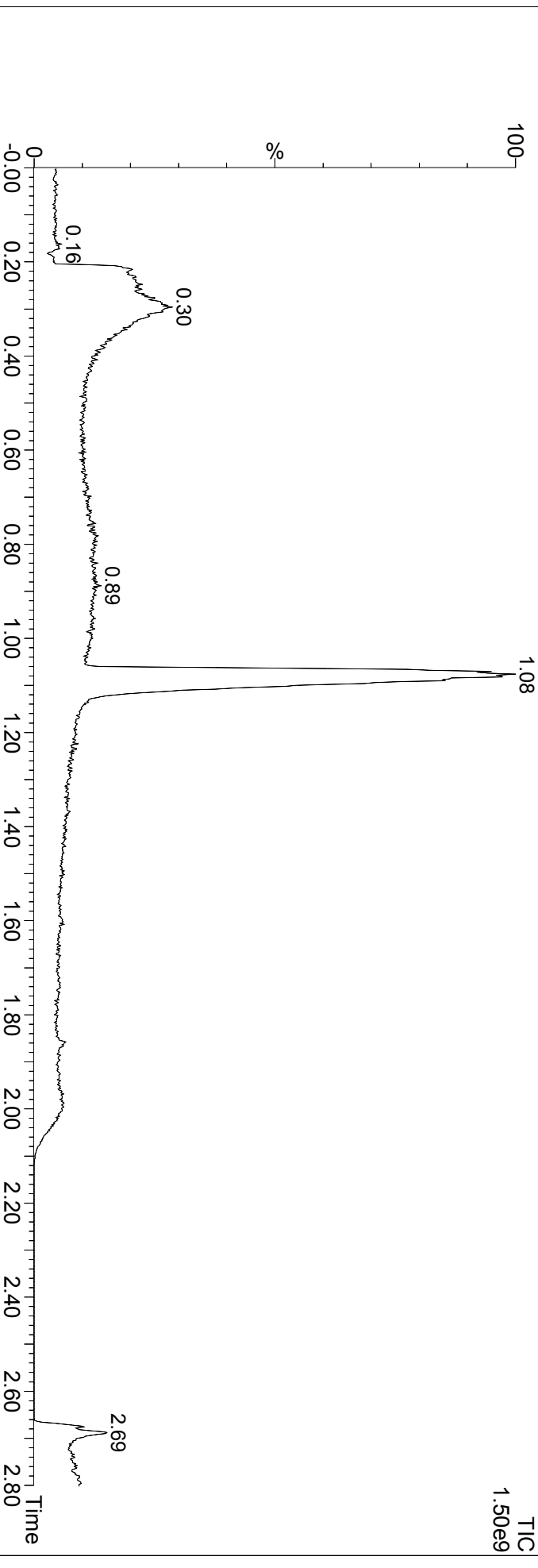
HMSL10547-102-01-LCMS-20160602

2: Diode Array
Range: 7.511e+1



HMSL10547-102-01-LCMS-20160602

1: Scan ES+
TIC
1.50e9



HMSL10547-102-01

HMSL10547-102-01-LCMS-20160602 538 (1.076) Cm (516:571)

1: Scan ES+
4.41e7

