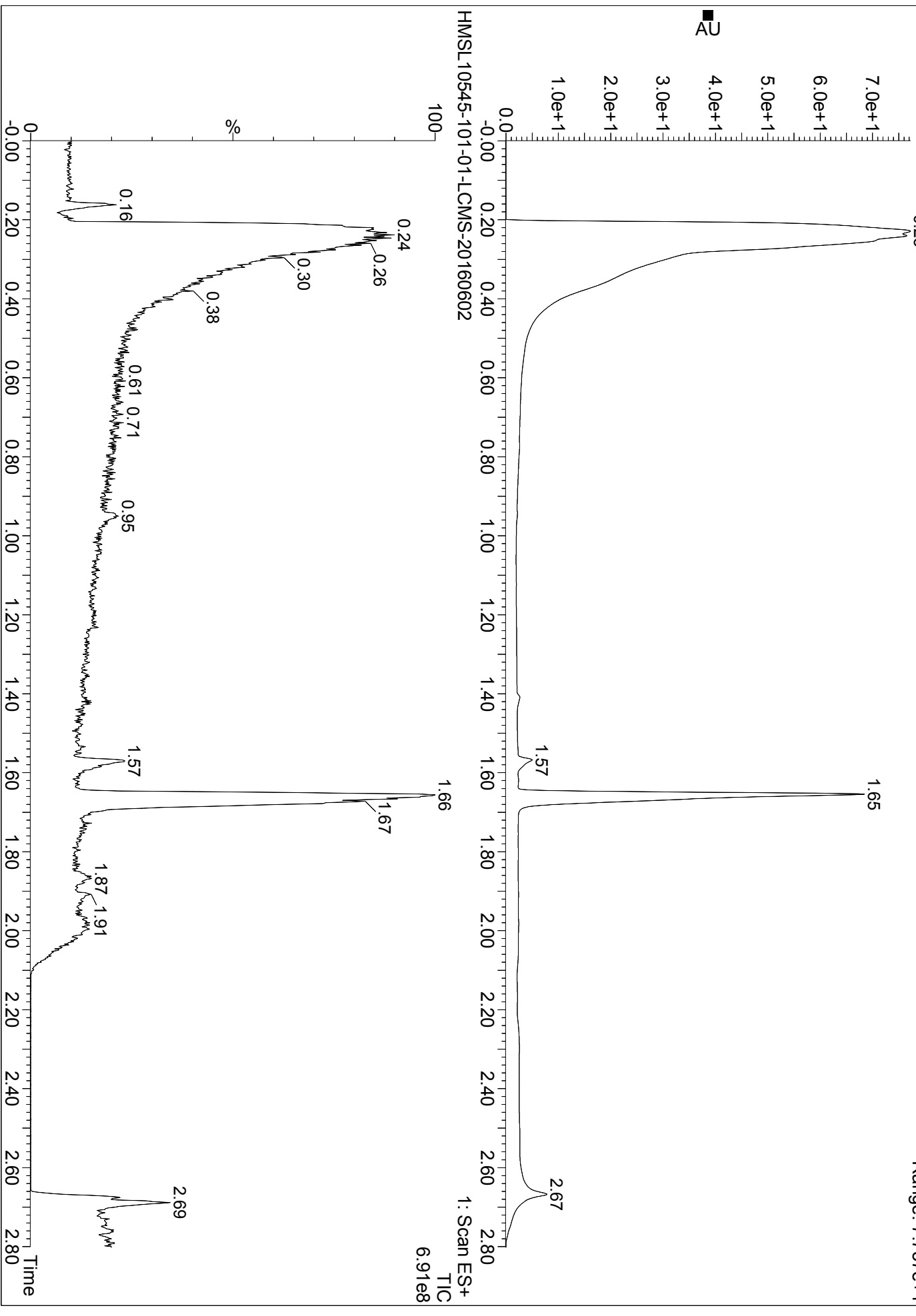


# HMSL10545-101-01

HMSL10545-101-01-LCMS-20160602

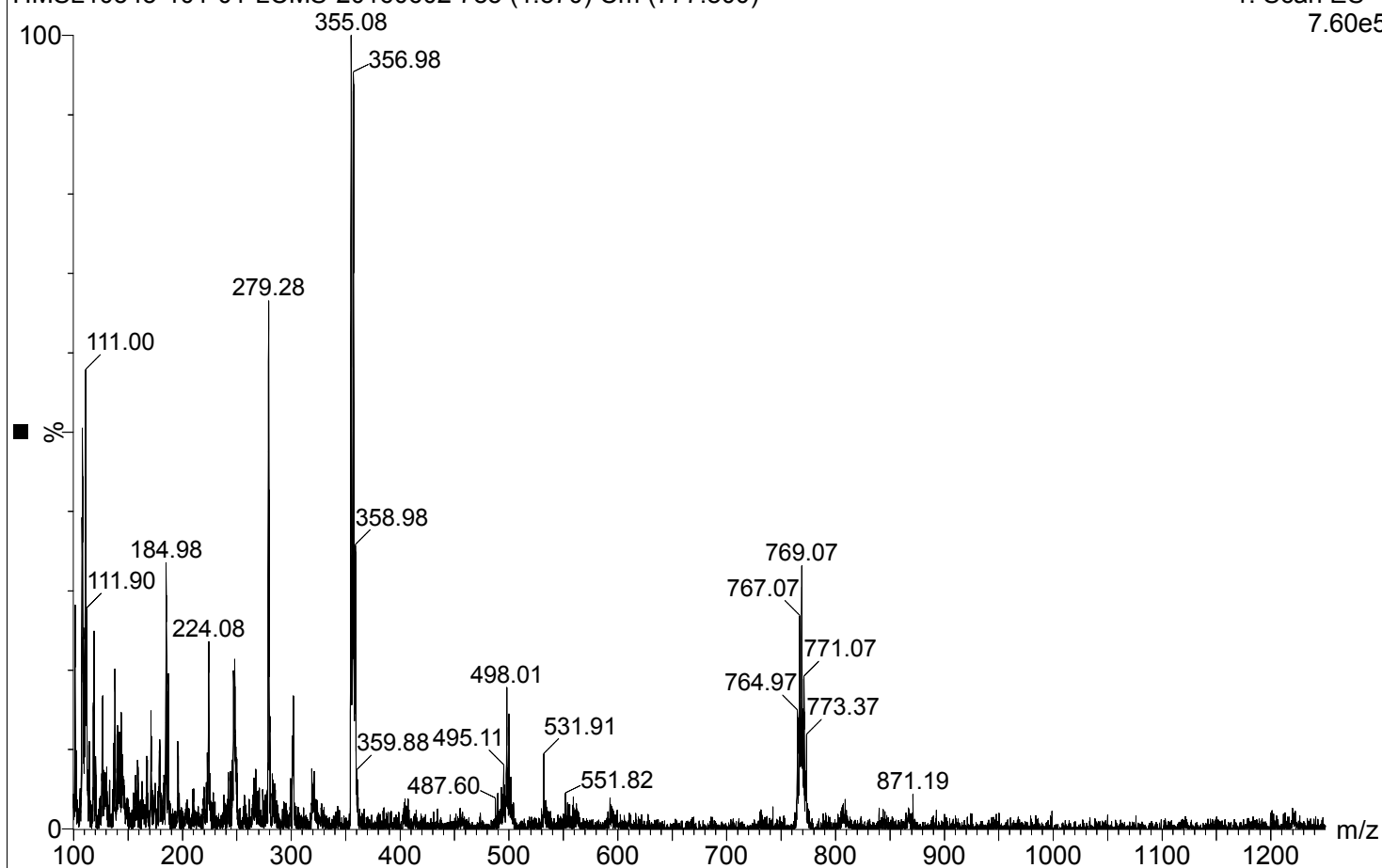
2: Diode Array  
Range: 7.737e+1



# HMSL10545-101-01

HMSL10545-101-01-LCMS-20160602 785 (1.570) Cm (777:800)

1: Scan ES+  
7.60e5



HMSL10545-101-01-LCMS-20160602 828 (1.656) Cm (814:854)

1: Scan ES+  
3.94e6

