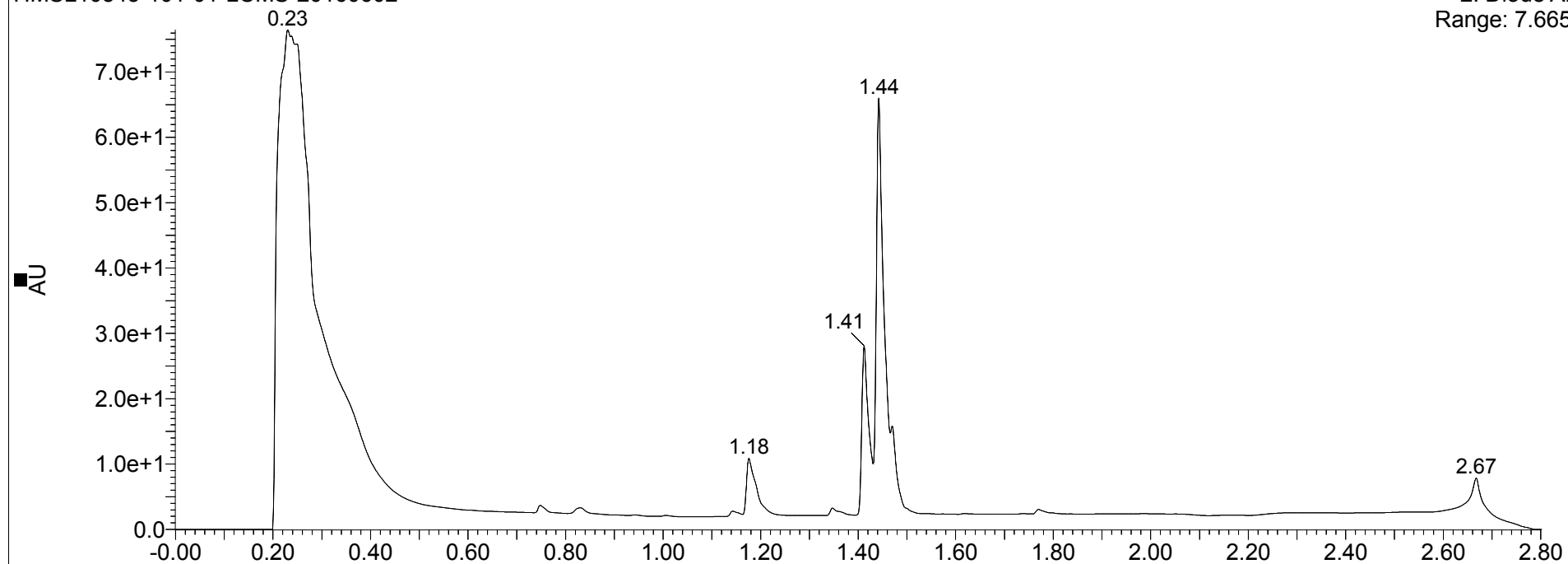


# HMSL10543-101-01

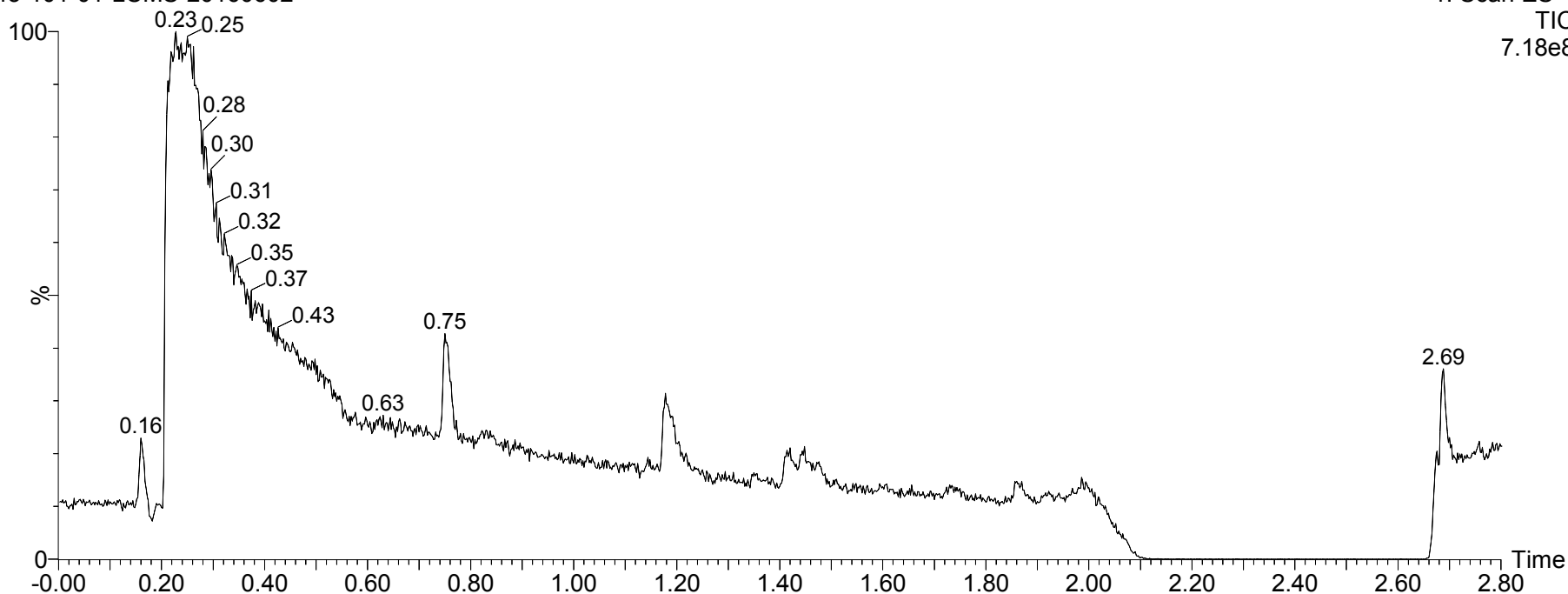
HMSL10543-101-01-LCMS-20160602

2: Diode Array  
Range: 7.665e+1



HMSL10543-101-01-LCMS-20160602

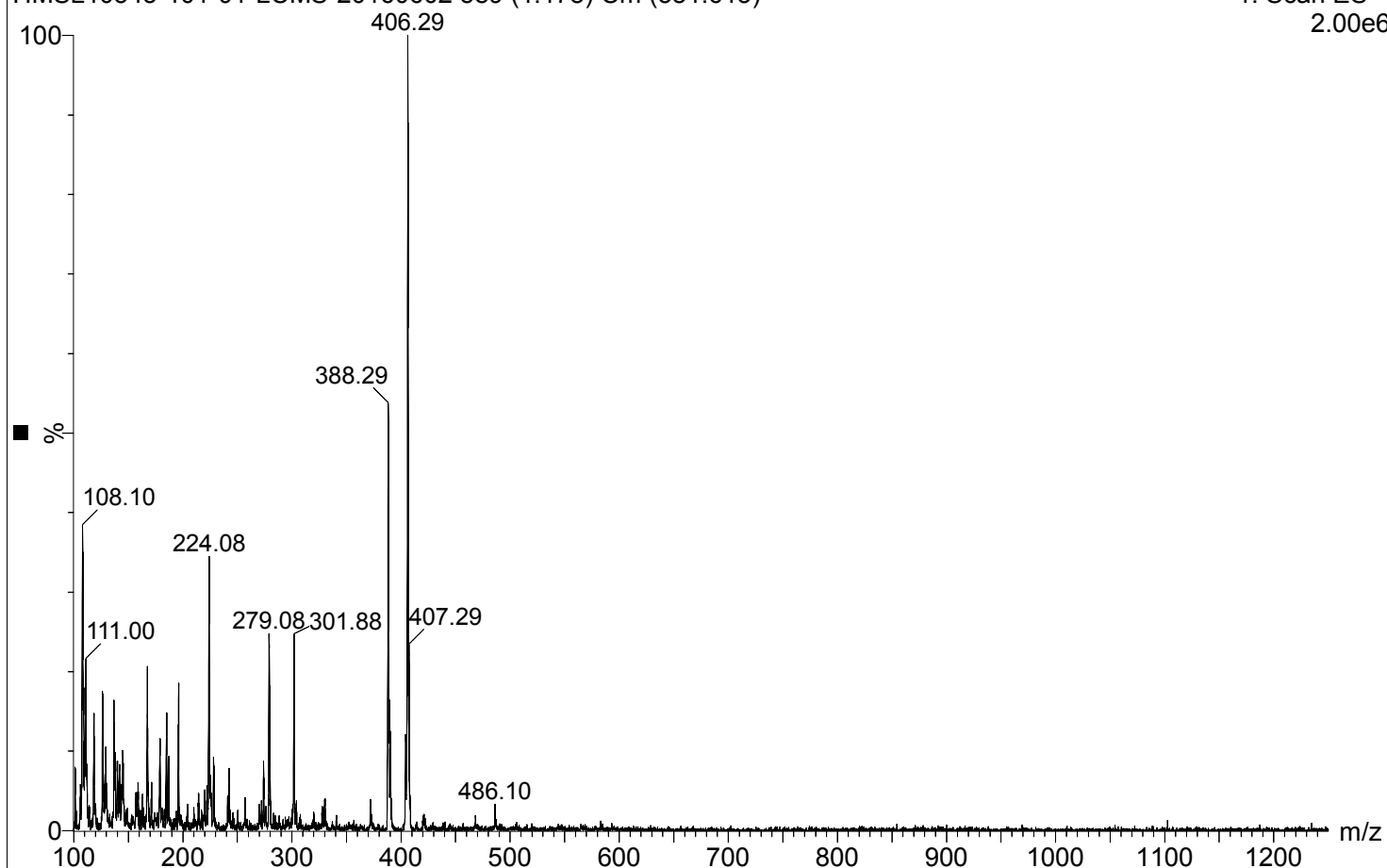
1: Scan ES+  
TIC  
7.18e8



# HMSL10543-101-01

HMSL10543-101-01-LCMS-20160602 589 (1.178) Cm (581:613)

1: Scan ES+  
2.00e6



HMSL10543-101-01-LCMS-20160602 724 (1.448) Cm (701:750)

1: Scan ES+  
1.75e6

