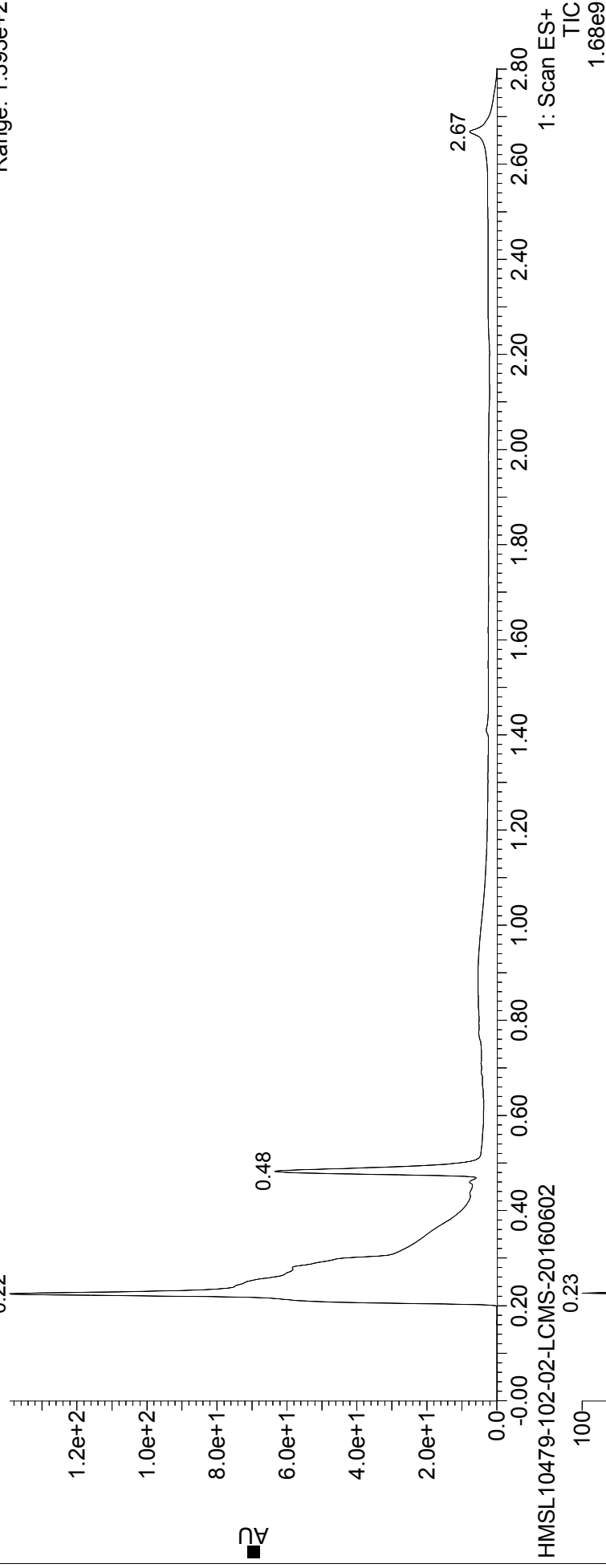


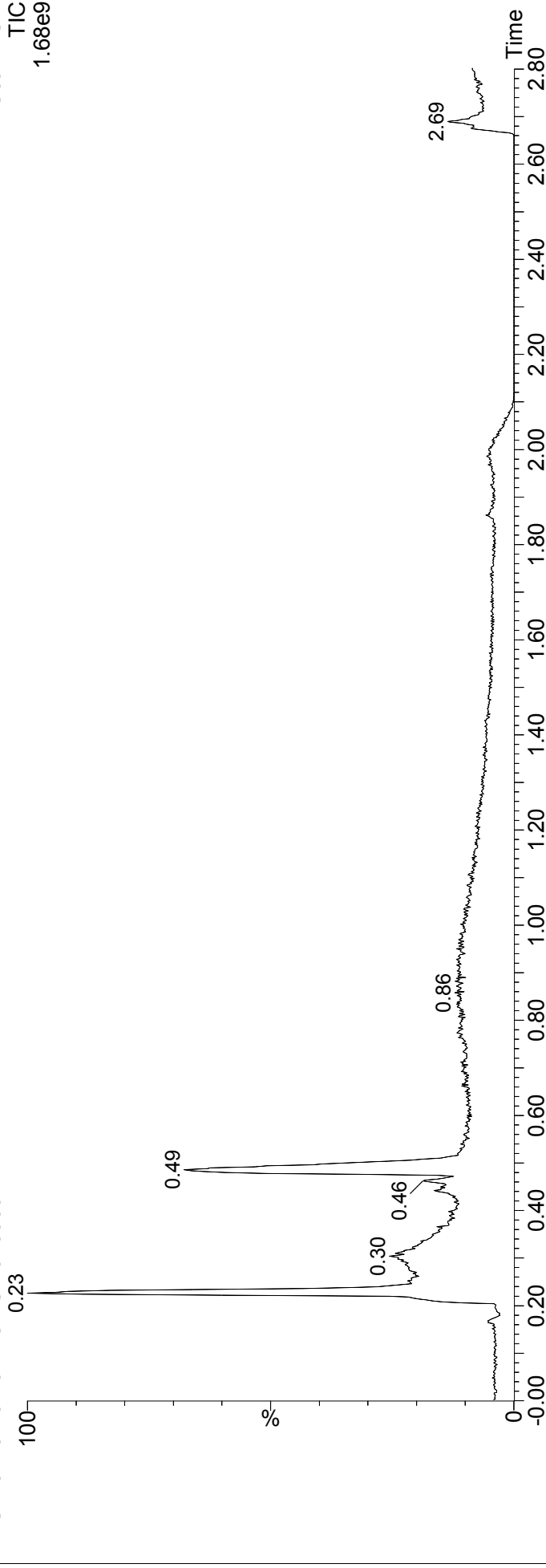
HMSL10479-102-02

HMSL10479-102-02-LCMS-20160602

2: Diode Array
Range: 1.393e+2



HMSL10479-102-02-LCMS-20160602



HMSL10479-102-02

HMSL10479-102-02-LCMS-20160602 243 (0.486) Cm (237:267)

1: Scan ES+
2.22e7

