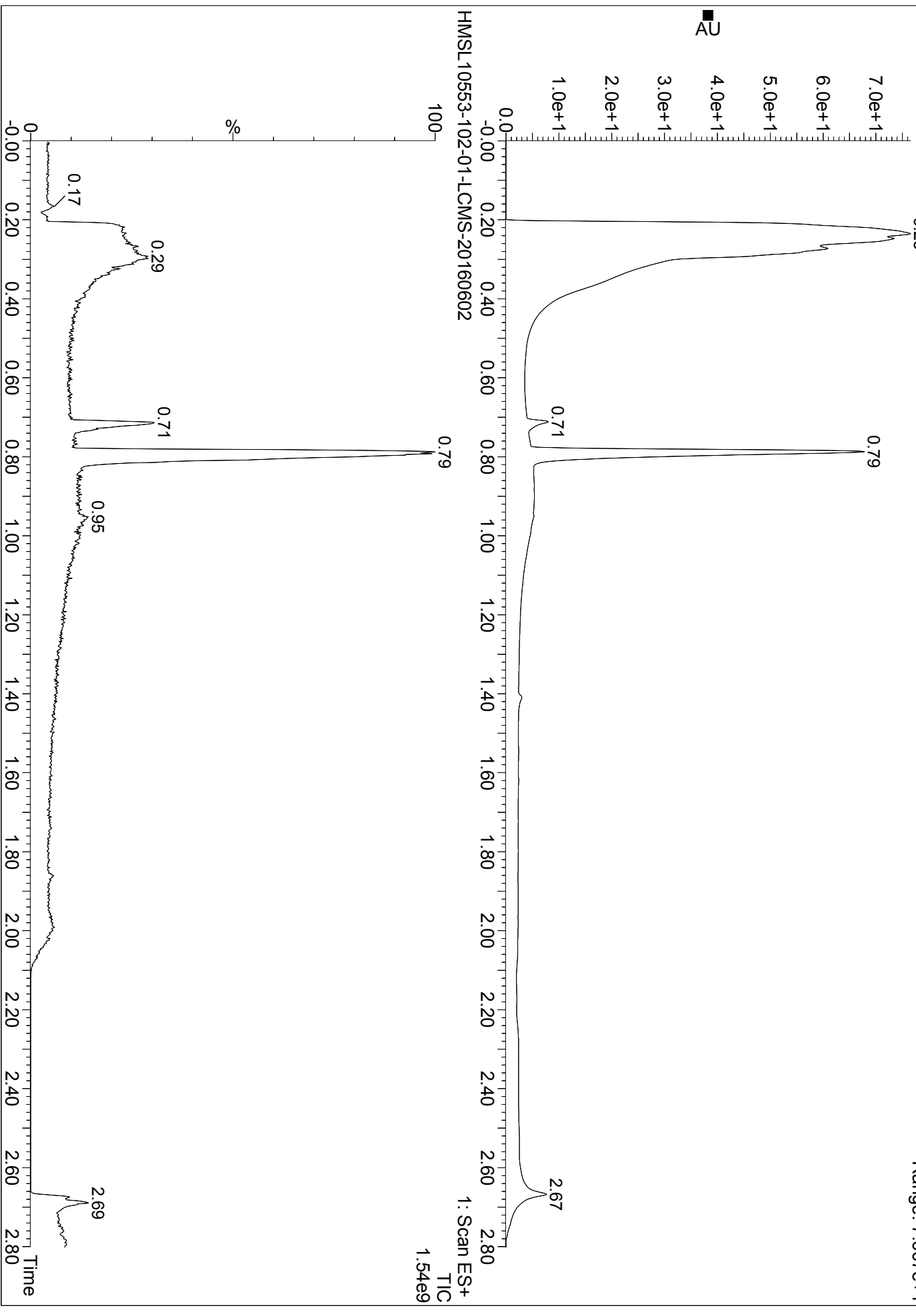


HMSL10553-102-01

HMSL10553-102-01-LCMS-20160602

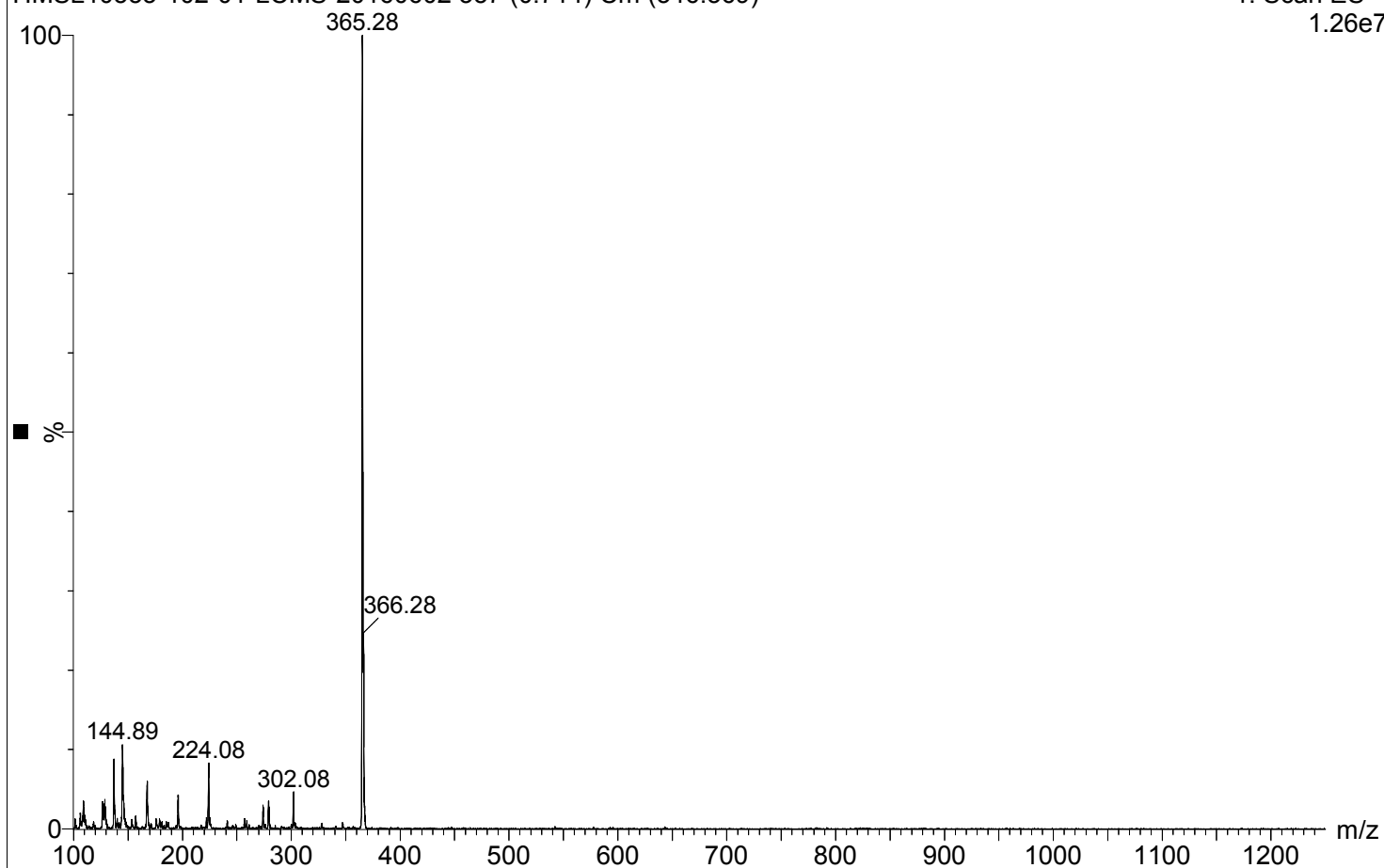
2: Diode Array
Range: 7.667e+1



HMSL10553-102-01

HMSL10553-102-01-LCMS-20160602 357 (0.714) Cm (346:369)

1: Scan ES+
1.26e7



HMSL10553-102-01-LCMS-20160602 394 (0.788) Cm (385:419)

1: Scan ES+
5.29e7

