

**HMSL10556-116-01**

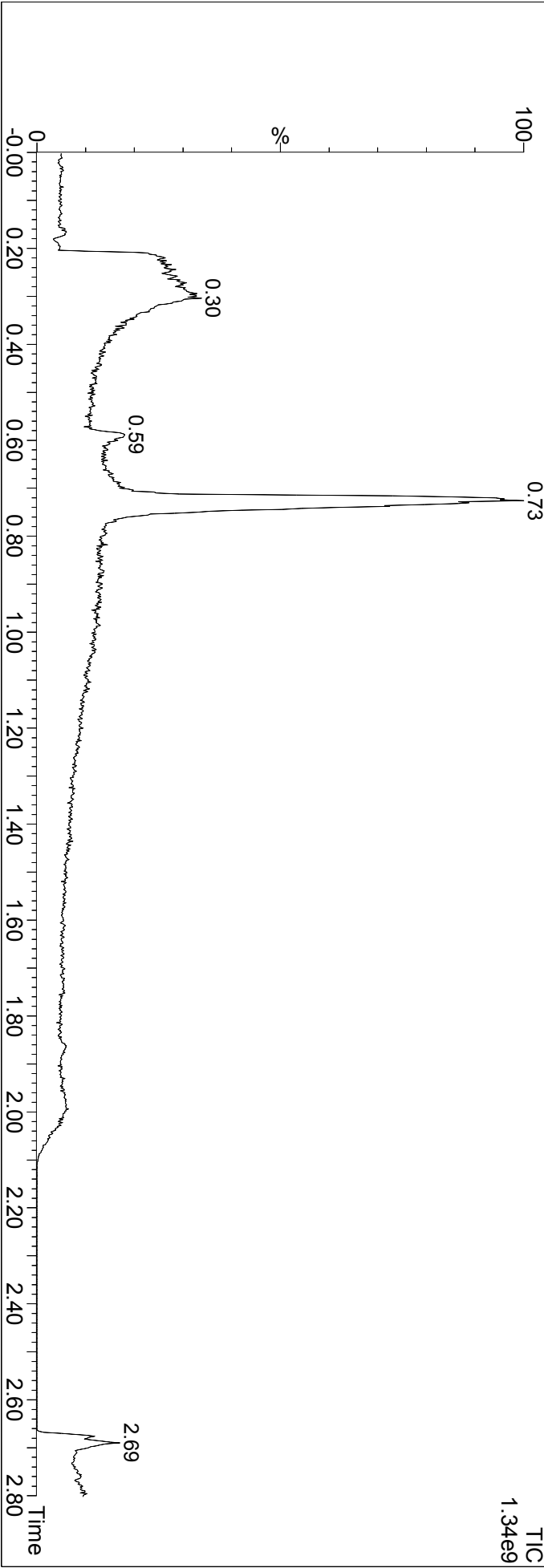
HMSL10556-116-01-LCMS-20160602

2: Diode Array  
Range: 8.446e+1



HMSL10556-116-01-LCMS-20160602

1: Scan ES+  
TIC  
1.34e9



HMSL10556-116-01

HMSL10556-116-01-LCMS-20160602 363 (0.726) Cm (344:382)

1: Scan ES+  
5.01e7

