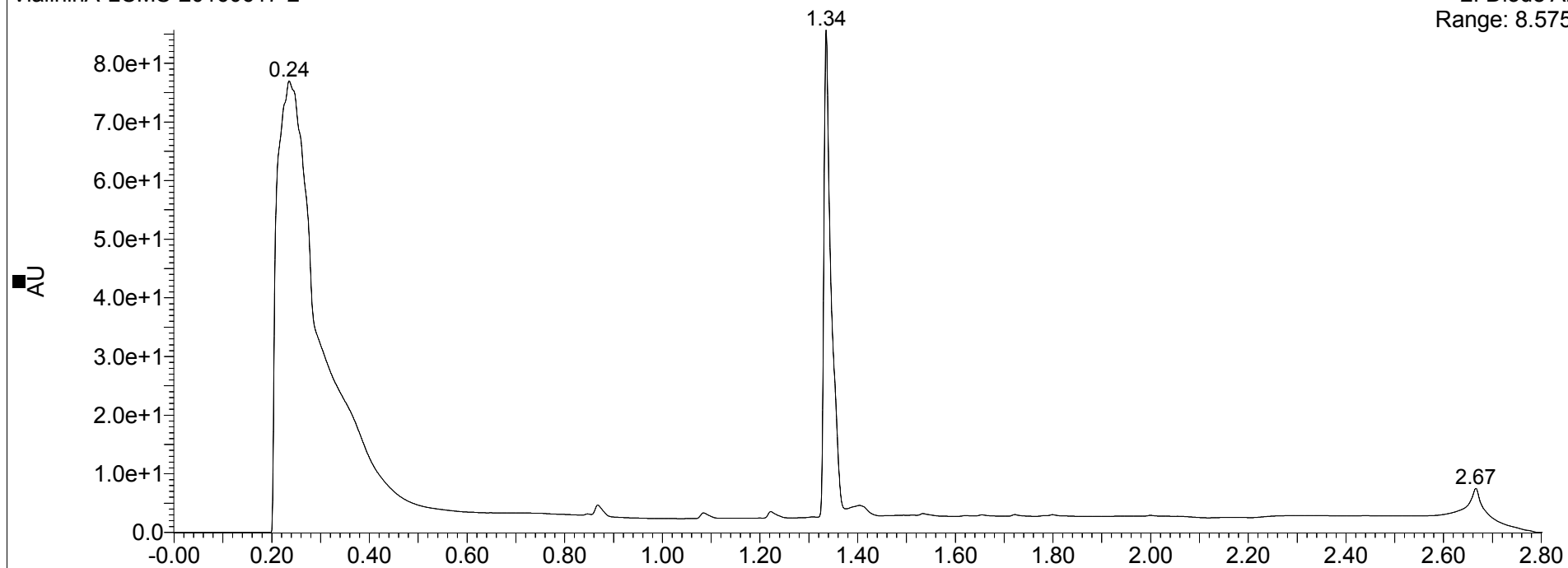


# VialininA

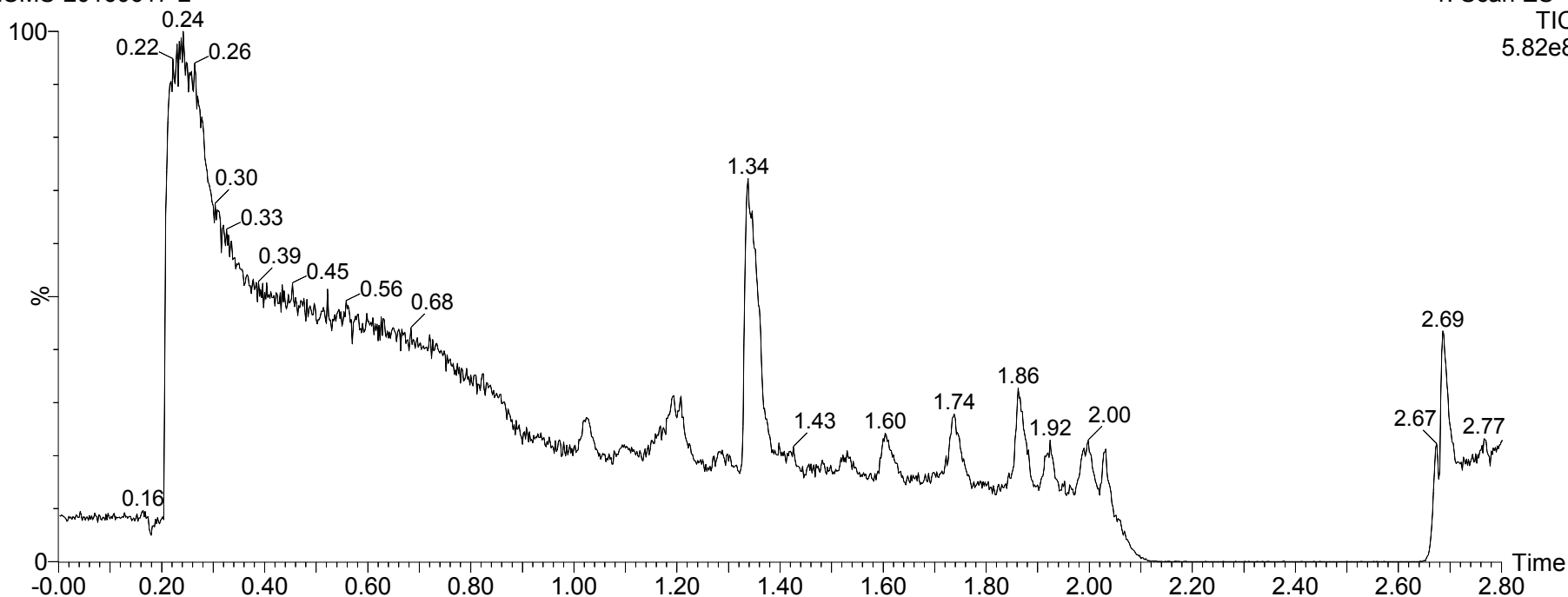
VialininA-LCMS-20160617-2

2: Diode Array  
Range: 8.575e+1



VialininA-LCMS-20160617-2

1: Scan ES+  
TIC  
5.82e8



# VialininA

VialininA-LCMS-20160617-2 669 (1.338) Cm (653:703)

1: Scan ES+  
2.06e6

